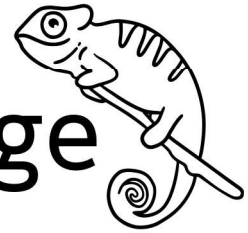


Masters of Camouflage



You will need a parent or trusted adult to help you with this activity !

Think about a time you've had to hide—like when you've played a game like of hide-and-seek. When hiding, what were some ways that kept from being seen? Did you move or make any sounds? Why do you think some places were good and others not so much?

Birds like the Cuban Nightjar are very good at hiding in plain sight. Their colors help them to blend in with their environment. Insects also use camouflage to blend in with their environment and keep them safe from other animals that love munching on them. But note that it also helps some insects catch prey that doesn't see them! Their colors, patterns and even physical shape make them indistinguishable from their surroundings.

In this activity you're going to go outside (with an adult) and help insects and birds find the best spot for them to blend in such as the grass, fallen leaves, branches, leaves, flowers, dirt, tree trunk and other plants.

You will need:

pencil

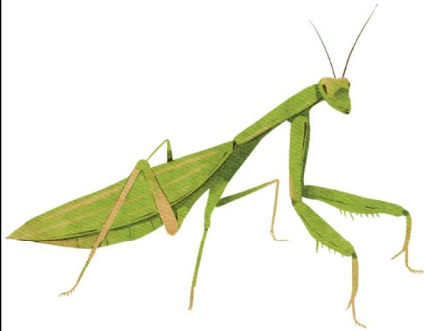
scissors

clipboard (optional)

copy of Masters of Camouflage page

- You can carry out this activity in pairs (ask a friend!) or groups
- Print a copy of page 2 (or page 3 for black and white printing) for each person and cut along the lines to make individual animal and insect cards
- Designate one person to read the descriptions on the cards
- Then together find the best spot in your backyard, park or school yard, for each animal and insect to blend in. Write your answers on the cards.

Masters of Camouflage



Praying Mantis

color: green or brown

blends in
with: _____



Nightjar

color: mottled and
streaked gray-brown

blends in
with: _____



Caterpillar

color: yellow-green

blends in
with: _____



Grasshopper

color: greenish-brown

blends in
with: _____



Owl

color: reddish-brown and
gray

blends in
with: _____

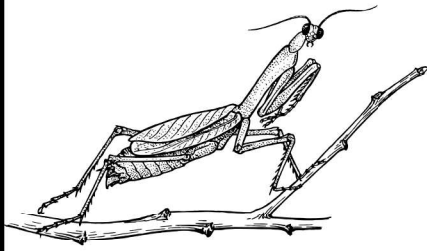


Centipede

color: dark brown to
reddish brown

blends in
with: _____

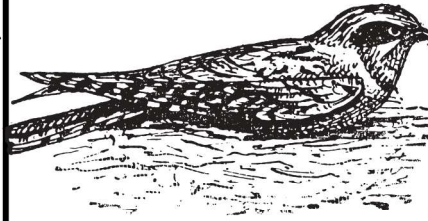
Masters of Camouflage



Praying Mantis

color: green or brown

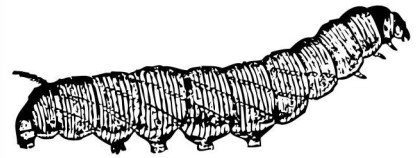
blends in
with: _____



Nightjar

color: mottled and
streaked gray-brown

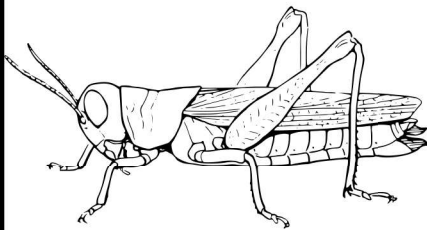
blends in
with: _____



Caterpillar

color: yellow-green

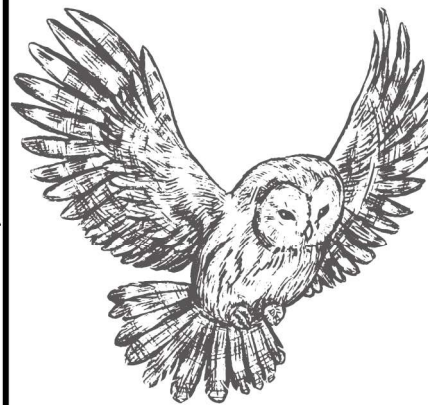
blends in
with: _____



Grasshopper

color: greenish-brown

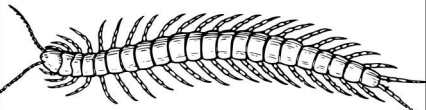
blends in
with: _____



Owl

color: reddish-brown and
gray

blends in
with: _____



Centipede

color: dark brown to
reddish brown

blends in
with: _____